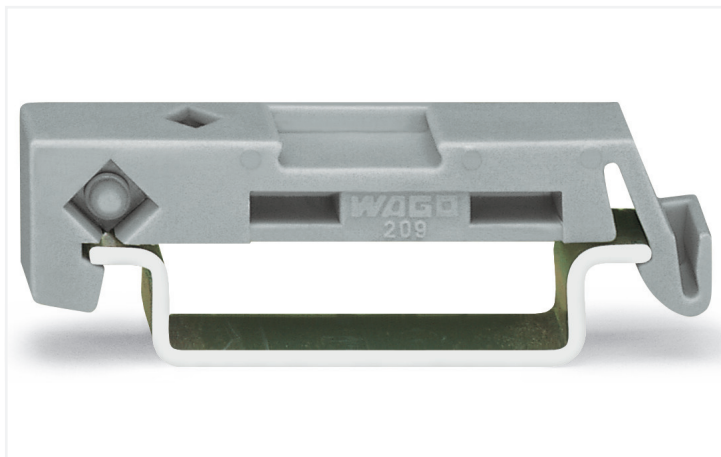


Data Sheet | Item Number: 209-137

Mounting adapter; can be used as end stop; 6.5 mm wide; gray

<https://www.wago.com/209-137>



Color: ■ gray

Technical data

Main product function	Mounting accessories
Mounting type	DIN-35 rail

Physical data

Width	6.5 mm / 0.256 inches
-------	-----------------------

Mechanical Data

Suitable	for male and female connectors with snap-in mounting feet
----------	---

Material Data

Color	gray
Material group	I
Insulation material	Polyamide (PA66)
Flammability class per UL94	V0
Fire load	0.045 MJ
Weight	1.5 g

Commercial data

Product Group	2 (Terminal Block Accessories)
eCl@ss 10.0	27-14-11-92
eCl@ss 9.0	27-14-11-92
ETIM 8.0	EC002848
ETIM 7.0	EC002848
PU (SPU)	25 pcs
Packaging type	Box
Country of origin	CN
GTIN	4050821575306
Customs tariff number	39269097900

Downloads

Environmental Product Compliance

Compliance Search

Environmental Product
Compliance 209-137



Documentation

Bid Text

209-137	19.02.2019	xml 2.57 KB	
209-137	18.08.2017	doc 23.00 KB	

CAD/CAE-Data

CAD data

2D/3D Models 209-137



CAE data

WSCAD Universe
209-137



ZUKEN Portal 209-137

